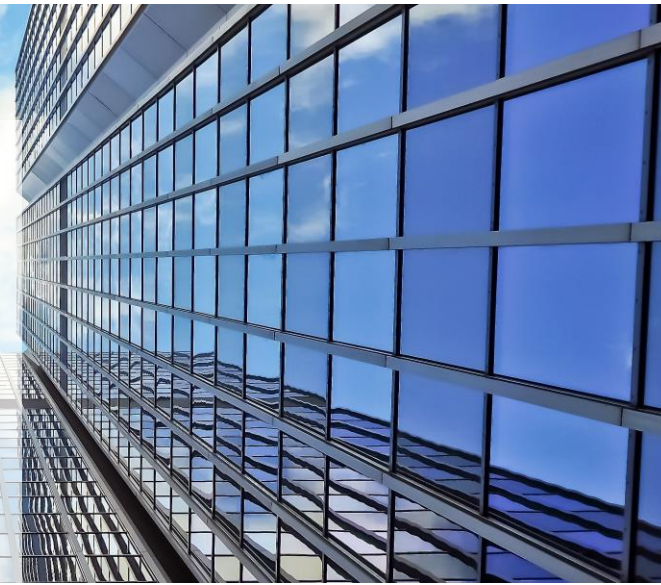


INTRODUCTION TO BREEAM

(Course Code: 86114)

BREEAM, owned by the BRE Trust, is one of the world's leading environmental assessment methods to assess new, existing buildings and community scale development. The BREEAM International adapts to different countries across the world including China. To support China's commitment in achieving 50% of new buildings to be certified green by 2020 for carbon emission and energy use reduction, there are increasing number of BREEAM certified buildings.

Mr Benjamin Pettitt, BRE China BREEAM In-Use Trainer, will provide you with basic understanding of the assessment process and timeline, and the key principles of certification that ensure the reliability, impartiality and comparability of a BREEAM rating to give added value to your project. Selected case studies in China and Asia will also be



Content

- The benefits of a sustainable building
- Scope of the BREEAM schemes
- Roles within BREEAM
- Assessment process
- Principles of certification
- Sharing of selected case studies in China and Asia



Date, Time and Venue

- 3 August 2018, 15:00 – 17:00.
- BEC Headquarters, 77 Tat Chee Avenue, Kowloon Tong, Hong Kong.

Medium of Instruction

- English.

Course fee

- Original price – HK\$540.
- Discounted price for supporting organisation – HK\$520.
- Special privilege for BEC Members – HK\$500.

Certificate

- A Certificate of Attendance will be awarded to participants after the course. This course is eligible for 2 BRE Academy CPD hours.

Speaker – Benjamin Pettitt

BRE China BREEAM In-Use Trainer

Benjamin has a background in the Renewable Energy and Sustainability Services Industry. He is responsible for delivering key BRE training programmes in China and Hong Kong. He

graduated at University of Cardiff and worked in the BREEAM Strategic Development Team in BRE UK. He then was seconded to BRE China in November 2017.



[Enroll Now](#)

Visit our website



www.bec.org.hk

Terms & Conditions

- Duly completed application form accompanied by payment will be considered for admission;
- Course fee is non-refundable, non-transferable and should be received by BEC IEE no later than 5 working days before the commencement of the course;
- Admission is made on a first-come-first-served basis;
- Successful applicants will be notified no later than 3 working days before the commencement of the course;
- Unsuccessful applicants will be given refund of course fees if they have already paid;
- The course will be cancelled with full refund when the typhoon signal no.8 or above, or black storm warning is hoisted 3 hours before the course commences;
- An official e-receipt will be distributed through email to the participant upon the completion of the course;
- BEC reserves the right not to conduct the course if the applications are below the required minimum number of participants, and course fees received will be refunded. All decisions made by BEC on matters related to the courses are final;
- Personal data including contact information will be used by BEC for its communications and direct marketing purpose, including newsletters and promotions of events, training courses and other activities. If you do not wish to receive any further promotional materials from BEC, please send an email to us at unsubscribe@bec.org.hk; and
- Information provided will be kept strictly confidential and will not be sold, reused, rented, loaned, or otherwise disclosed to third party.

About Business Environment Council Limited 商界環保協會有限公司

Business Environment Council Limited ("BEC") is an independent, charitable membership organisation, established by the business sector in Hong Kong. Since its establishment in 1992, BEC has been at the forefront of promoting environmental excellence by advocating the uptake of clean technologies and practices which reduce waste, conserve resources, prevent pollution and improve corporate environmental and social responsibility. BEC offers sustainable solutions and professional services covering advisory, research, assessment, training and award programs for government, business and the community, thus enabling environmental protection and contributing to the transition to a low carbon economy. For more information in BEC, please visit www.bec.org.hk.

About BEC Institute of Environmental Education

BEC Institute of Environmental Education ("BEC IEE"), a division of BEC, provides a platform for business managers and decision makers, to advance their knowledge and develop the expertise necessary for environmental decision-making. BEC IEE also facilitates professional development by promoting quality environmental education through various environmental education programmes. For further enquiries or assistance, please contact BEC IEE at beciee@bec.org.hk.

About BRE Academy

BRE Academy is the leading international provider of blended learning training and education programmes for professionals and employers. Developed by BRE and industry experts, its content rich, high quality courses, both online and classroom, along with learning materials, are shared with a vast audience from students to professionals who work within the Built Environment. It is the lifelong learning extension of BRE, a world leading multi-disciplinary building science based company, whose mission is to improve the built environment through research and knowledge generation. bBRE Academy's aim is to help organisations meet their business objectives, support professionals in their careers, and further develop the next generation of skilled operatives in the industry. For more information in BRE Academy, please visit <https://bre.ac/about/>.



About Hong Kong Centre for Carbon Innovation

Hong Kong Centre for Carbon Innovation ("HKCCI") is led by the Edinburgh Centre for Carbon Innovation ("ECCI") and is part of the University of Edinburgh ("UoE"). Our Partners include Edinburgh Napier University, BRE Scotland, and the Scottish Government (through Scottish Development International). HKCCI supports the exchange of know-how, enterprises and people with expertise in low-carbon solutions, clean energy, and UoE's world-famous biomedical sciences between Scotland and the Hong Kong and Chinese markets. For more information in HKCCI, please visit <http://www.hkcci.com.hk/>.

Supporting Organisations

