

# ADVANCED TRAINING ON THE WELL BUILDING STANDARD v2™

(Course Code: 86118)

26 October 2018 (9:00 to 18:00)

\$ HK\$2,600\*

\* **Early Bird Discount** (5%) – on or before 12 October 2018.

\* **Group Discount** (5%) – for group of 2 or more from the same organisation.

\* **Additional Discount for BEC Member/ supporting organisation**  
Council Member (10%); Corporate or General or Affiliate Member or supporting organisation (5%).

This full-day advanced training on the WELL Building Standard v2™ will be delivered by Ms Victoria Gilbert – past Vice President at IWBI. It will drive deeper into the standard, building on introductory presentations to examine key processes with WELL Certification and exploring WELL Concepts in depth. The process for developing Alternative Adherence Paths will be discussed in the context of a scenario, as well as procedures for seeking equivalencies, using Crosswalks, and developing innovations. Key public health research will provide a basis to consider each WELL Concept in depth, allowing for a greater discussion of how WELL Features address environmental concerns. Finally, preconditions will be presented in the context of a project scenario, and a breakout activity which will utilise expert groups and a project checklist will allow participants to consolidate their learning.



**Enroll  
Now**

## Content

- Deep drive into WELL Concepts
  - Air, water, nourishment, light, movement, thermal comfort, sound, materials, mind and community
- WELL certification in context
  - Certification process, alternative adherence paths, equivalencies, crosswalks, innovations
- WELL features in context
  - Preview: Breakout activity
  - Preconditions
  - Breakout activity: Project scenario
- WELL AP examination preparation

## Medium of Instruction

English.

## Venue

BEC Headquarters, 77 Tat Chee Avenue, Kowloon Tong, Hong Kong.

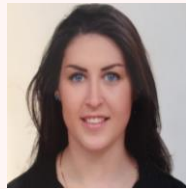
## Certificate

A Certificate of Attendance will be awarded to participants after the course. This course is eligible for 8.0 WELL CE hours for WELL AP.



## Speaker – Ms Victoria Gilbert

*Associate Director, Wellness Consulting, Colliers International Pacific Ltd.  
Past Vice President of Asia Education, IWBI™*



Victoria is an experienced sustainability professional with extensive international consulting experience, focused on integrating wellness and sustainability principles into corporate

strategy and building design. Previously in her role as Vice President at the International WELL Building Institute, Victoria was instrumental in the launch and expansion of the WELL Building Standard in Asia Pacific. She has consulted on over 25 projects in the region, including completing the first commercial project to achieve WELL certification in Asia, for Haworth in Shanghai. Victoria has worked closely with many multinational companies, developers, and occupiers.



Visit our website



www.bec.org.hk

## Terms & Conditions

- Duly completed application form accompanied by payment will be considered for admission;
- Course fee is non-refundable, non-transferable and should be received by BEC IEE no later than 5 working days before the commencement of the course;
- Admission is made on a first-come-first-served basis;
- Successful applicants will be notified no later than 3 working days before the commencement of the course;
- Unsuccessful applicants will be given refund of course fees if they have already paid;
- The course will be cancelled with full refund when the typhoon signal no.8 or above, or black storm warning is hoisted 3 hours before the course commences;
- An official e-receipt will be distributed through email to the participant upon the completion of the course;
- BEC reserves the right not to conduct the course if the applications are below the required minimum number of participants, and course fees received will be refunded. All decisions made by BEC on matters related to the courses are final;
- Personal data including contact information will be used by BEC for its communications and direct marketing purpose, including newsletters and promotions of events, training courses and other activities. If you do not wish to receive any further promotional materials from BEC, please send an email to us at [unsubscribe@bec.org.hk](mailto:unsubscribe@bec.org.hk); and
- Information provided will be kept strictly confidential and will not be sold, reused, rented, loaned, or otherwise disclosed to third party.

## About Business Environment Council Limited 商界環保協會有限公司

Business Environment Council Limited ("BEC") is an independent, charitable membership organisation, established by the business sector in Hong Kong. Since its establishment in 1992, BEC has been at the forefront of promoting environmental excellence by advocating the uptake of clean technologies and practices which reduce waste, conserve resources, prevent pollution and improve corporate environmental and social responsibility. BEC offers sustainable solutions and professional services covering advisory, research, assessment, training and award programs for government, business and the community, thus enabling environmental protection and contributing to the transition to a low carbon economy. For more information in BEC, please visit [www.bec.org.hk](http://www.bec.org.hk).

## About BEC Institute of Environmental Education

BEC Institute of Environmental Education ("BEC IEE"), a division of BEC, provides a platform for business managers and decision makers, to advance their knowledge and develop the expertise necessary for environmental decision-making. BEC IEE also facilitates professional development by promoting quality environmental education through various environmental education programmes. For further enquiries or assistance, please contact BEC IEE at [beciee@bec.org.hk](mailto:beciee@bec.org.hk).

## Supporting Organisations

